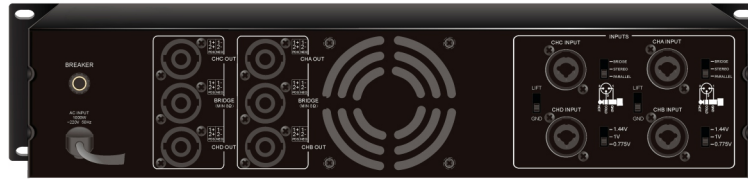




# Professional Digital Amplifier

## TS-4350PD



### Description:

It is suitable for medium and large theaters, outdoor performances, stadiums, nightclubs, entertainment venues, bars, banquet halls, concert halls and so on.

### Feature:

- \* The latest class-D amplifier design, low distortion and high efficiency.
- \* Switching power supply, with high efficiency; soft starter can prevent absorbing large currents into the power grid when starting up and interfering with other electrical devices.
- \* Effectively suppress power harmonics, meet the EU green power standard.
- \* Intelligent peak clipper controls the power module and speaker system to work within a safe range.
- \* Standard XLR + TRS 1/4" composite input interface, simple interface design is more convenient for different users.
- \* The amplifier has three options of input sensitivity, which can easily accept a wide range signal source input.
- \* Suitable for different places, stereo mode or bridge mode are optional.
- \* Grounded input pin and suspension control switch can effectively suppress noise.
- \* With over voltage protection, under voltage protection, over temperature voltage limit, over temperature shutdown, over current voltage limit, over current shutdown, DC protection, output short circuit protection, temperature control fan, amplifier frequency synchronization, PWM frequency synchronization, etc.
- \* Built-in recoverable unique cut-off switch.
- \* The dust-proof mesh of the panel is removable and washable.

### Specification:

Model	TS-4350PD
Output power (20-20KHz/THD≤1%) stereo/parallel 8Ω×4	200W×4
Output power (20-20KHz/THD≤1%) stereo/parallel 4Ω×4	350W×4
Bridge 8Ω×2	700W×2
Connection	XLR, TRS interface
Voltage gain (@1KHz)	34.4dB
Input sensitivity	0.775V/1V/1.44V
Input impedance	10KΩ unbalanced, 20KΩ balanced
Frequency response (@ 1W Power)	20-20KHz/+0/-2dB
THD+N (@1/8 power)	≤0.05%
SNR (A-weighted)	≥95dB
Damping coefficient (@ 1KHz)	≥200 @ 8Ω
Resolution (@1KHz)	≥80dB
Protection method	Over current protection, DC protection, short circuit protection
Indicator	Power, protection, distortion
Cooling method	Fan cooling
Power supply	~ AC 220V 50Hz
Maximum power consumption	1800W
Size	483×350×88mm
Weight	8.9Kg